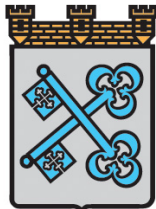


Our Life As Elderly  
2004-01-01 – 2006-12-31

# *Our life as elderly*

[www.ourfuture.se](http://www.ourfuture.se)

Leading partner:



**CITY OF LULEÅ**



*Centre for Rural Health*  
*Research and Policy*



# *Growing old – hopes and fears*



In 2025, 75 year-olds have other wants and desires

Society of 2025 - finances, workforce, competency, technology etc.



*Our life  
as elderly*



CITY OF LULEÅ



# *Ask yourself*



- How do I want to live?
- What kind of home do I want?
- What will I be able to do?
- Who can make this a reality?



*The time spent  
in old-age is  
longer and healthier*

The chain needs to be expanded with more links, not just care, but with "enablers".



*Novel  
thinking,  
together*

**Project members in Our Life as Elderly:**

Bodø kommune, Norway

Centre for Rural Health Research and Policy, Scotland

Føroya kommunufelag, Faeroe Islands

Lieksan kaupunki, Finland

Oulun kaupunki, Finland

City of Luleå, Sweden

**Cooperative partners:**

County administrative board of Norrbotten County

Employment Agency, Luleå

Department of health sciences, Luleå University of  
Technology

Association of Local Authorities, Norrbotten

County Council of Norrbotten County

**Partial financers:**

Interreg IIIB

Northern Periphery



*Our life  
as elderly*

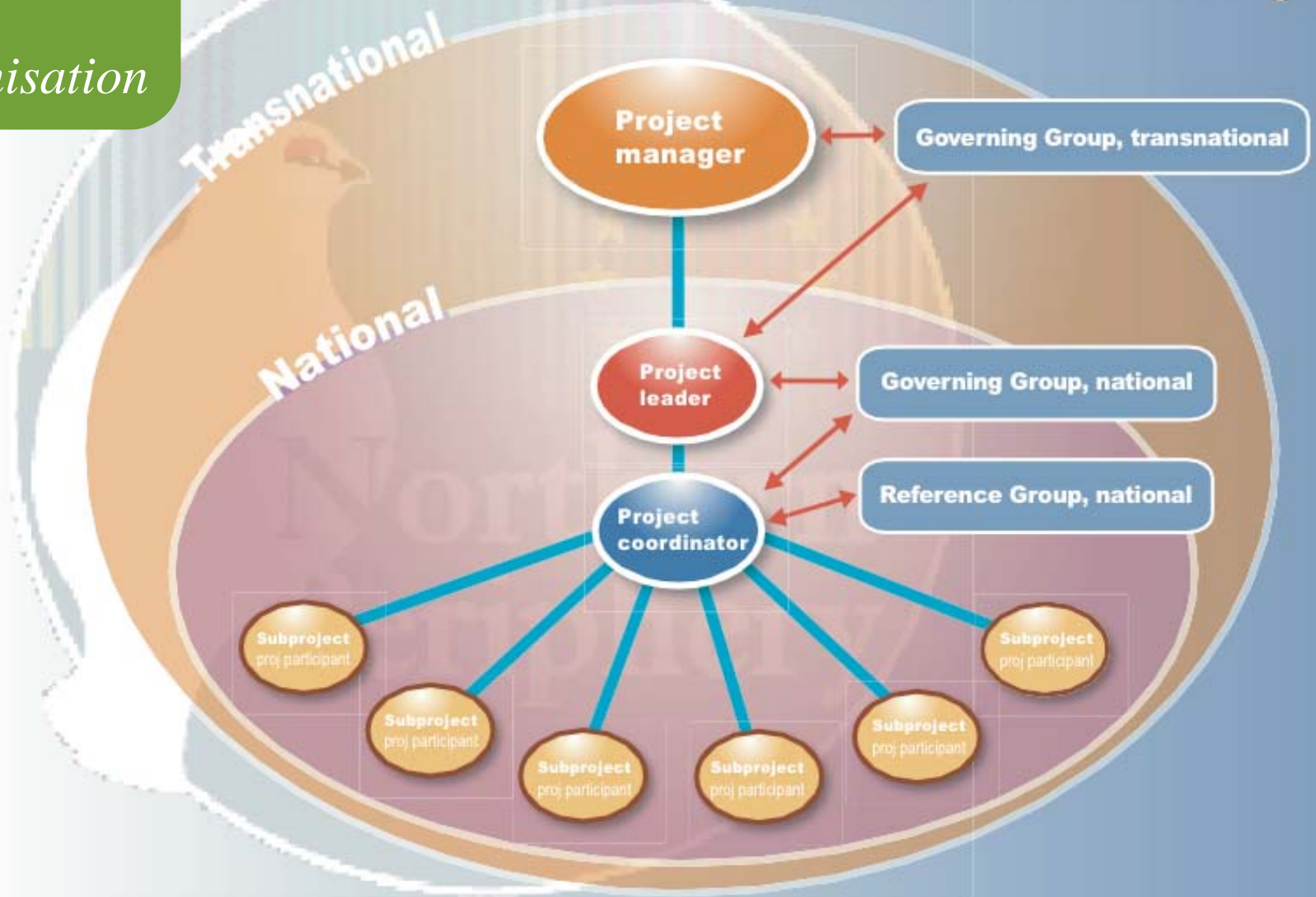


CITY OF LULEÅ



# Our life as elderly

## Organisation



# *Subprojects*

- Competence development and personnel recruitment
- Housing
- Service for the elderly
- Relatives
- Healthcare
- Networking



Subproject

# *Competence development and personnel recruitment*

**Will it be difficult to recruit trained personnel in the future? Will other kinds of expertise be needed?**

**This subproject works with the following issues, among others:**

- increasing the career status of working in geriatric care
- programmes for personnel development and training
- better personnel planning for more satisfied staff
- better quality and maximum cost efficiency
- realising new techniques



Subproject

# *Housing*

**The elderly housing of today is similar to the “long-term care” of yesterday. What new ideas can improve housing and quality of life?**

**This subproject works with the following issues, among others:**

- different housing solutions
- new concepts for housing, both public and private
- wishes for future housing for the elderly
- wishes to stay in one's own home



Subproject

## *Service for the elderly*

**What services will we want to have when we have grown old? What do we demand from society and what responsibility will we have ourselves?**

**This subproject works with the following issues, among others:**

- developing new organisational models
- creating better conditions for being able to stay in one's own home
- improving access to shopping, the post, public transport, etc.
- maintaining service in rural areas



Subproject

## *Relatives, close friends*

**What responsibility can relatives be expected to take in the future when one grows old? What support do relatives and friends need, and who can provide that support?**

**This subproject works with the following issues, among others:**

- **developing systems and solutions so that relatives can contribute more**
- **family ties and cooperation across generational boundaries**
- **learning from each other's similarities and differences between the countries**
- **improving the financial and professional support for relatives**
- **alternatives for remote rural areas**
- **use of new approaches and techniques**



*Our life  
as elderly*



CITY OF LULEÅ



Subproject

## *Healthcare*

**We are relatively healthy at an ever-higher age, and are also well-informed and online. What kind of keep-fit measures will the elderly of the future need and who can offer them?**

**This subproject works with the following issues, among others:**

- **personnel competency for positive development**
- **developing care through new ways of working**
- **developing methods to guarantee medical safety**
- **developing cooperation and the networks between groups in the chain of care**



Subproject

# *Networking*

**It is through dialogue and intellectual exchange that we can free our minds, and creatively and positively look to the possibilities of the future for the elderly.**

**This subproject works with the following issues, among others:**

- creating functioning networks between all concerned parties
- learning from other regions
- using the knowledge of the elderly



*Our life  
as elderly*



CITY OF LULEÅ



# *Open dialogue*



- Private persons of different ages
- Associations and other organisations
- Politicians and officials
- Care personnel  
...and many others

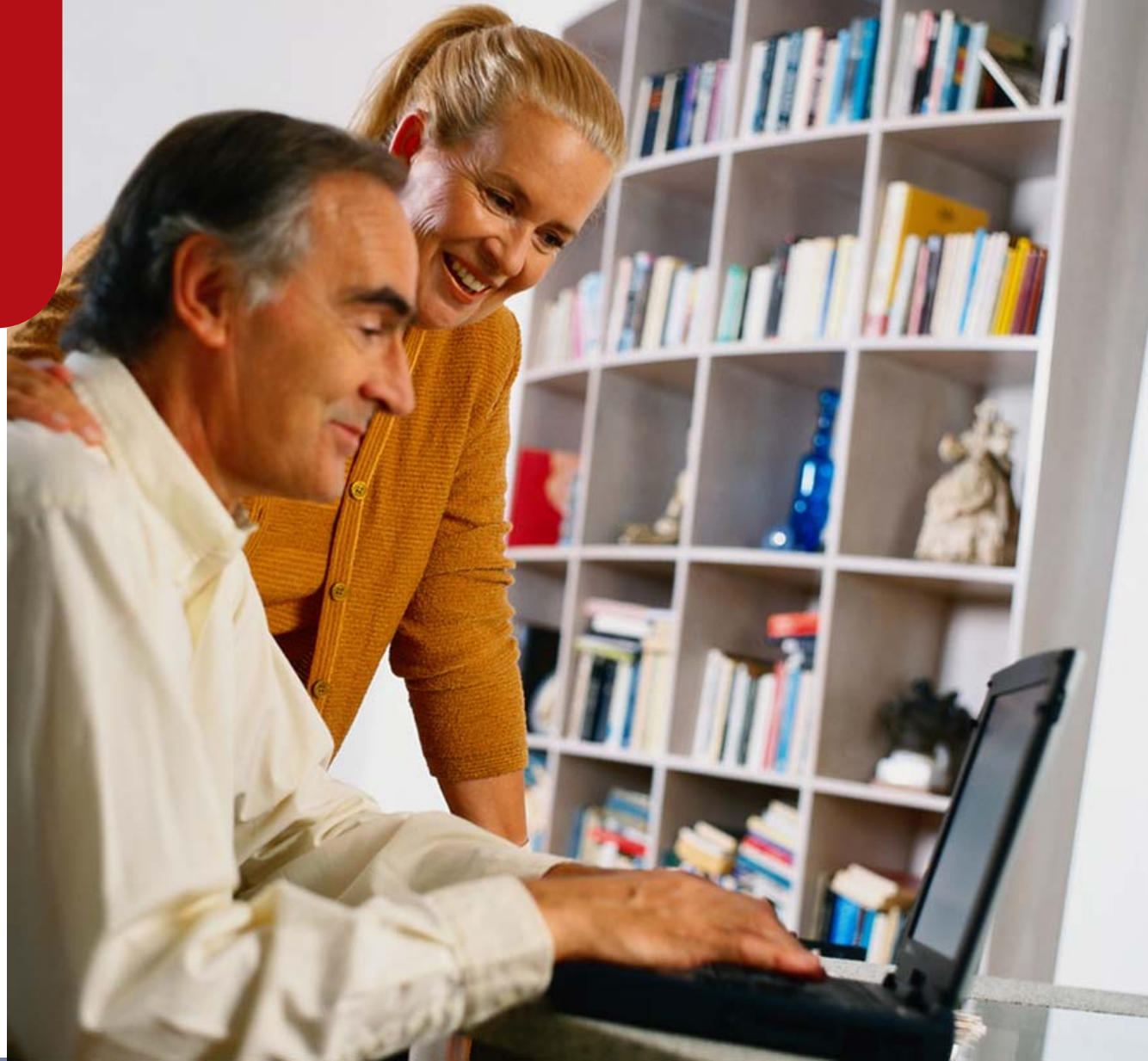


## *Expected results 2006*

- Organisational models for the management and operation of geriatric care have been developed.
- There are established models for national and transnational collaboration and dialogues, between concerned groups and collaborating regions.
- There are new technical solutions within geriatric care.
- New working methods for geriatric care in small communities and in remote rural areas have been developed.



*Our life  
as elderly*



CITY OF LULEÅ



*Your views  
are welcome!*

[www.ourfuture.se](http://www.ourfuture.se)

